

40-168

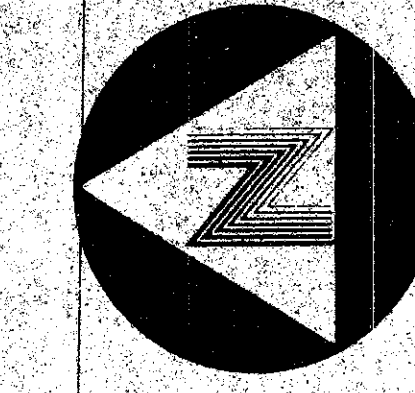
SEE SHEET 3 OF 5

MATCH LINE

TRACT "H"

SEE SHEET 3 OF 5
MATCH LINE

168



0 50' 100'
GRAPHIC SCALE

STATE OF FLORIDA
COUNTY OF PALM BEACH
THIS PLAT WAS FILED FOR
RECORD AT _____ DAY OF _____
A.D. 1980, AND DULY RECORDED
IN PLAT BOOK _____ AND
PAGE _____
JOHN B. DUNKLE, CLERK
CIRCUIT COURT
BY: _____ DC.

TARTAN LAKES, PLAT NO. 1 (P.U.D.)

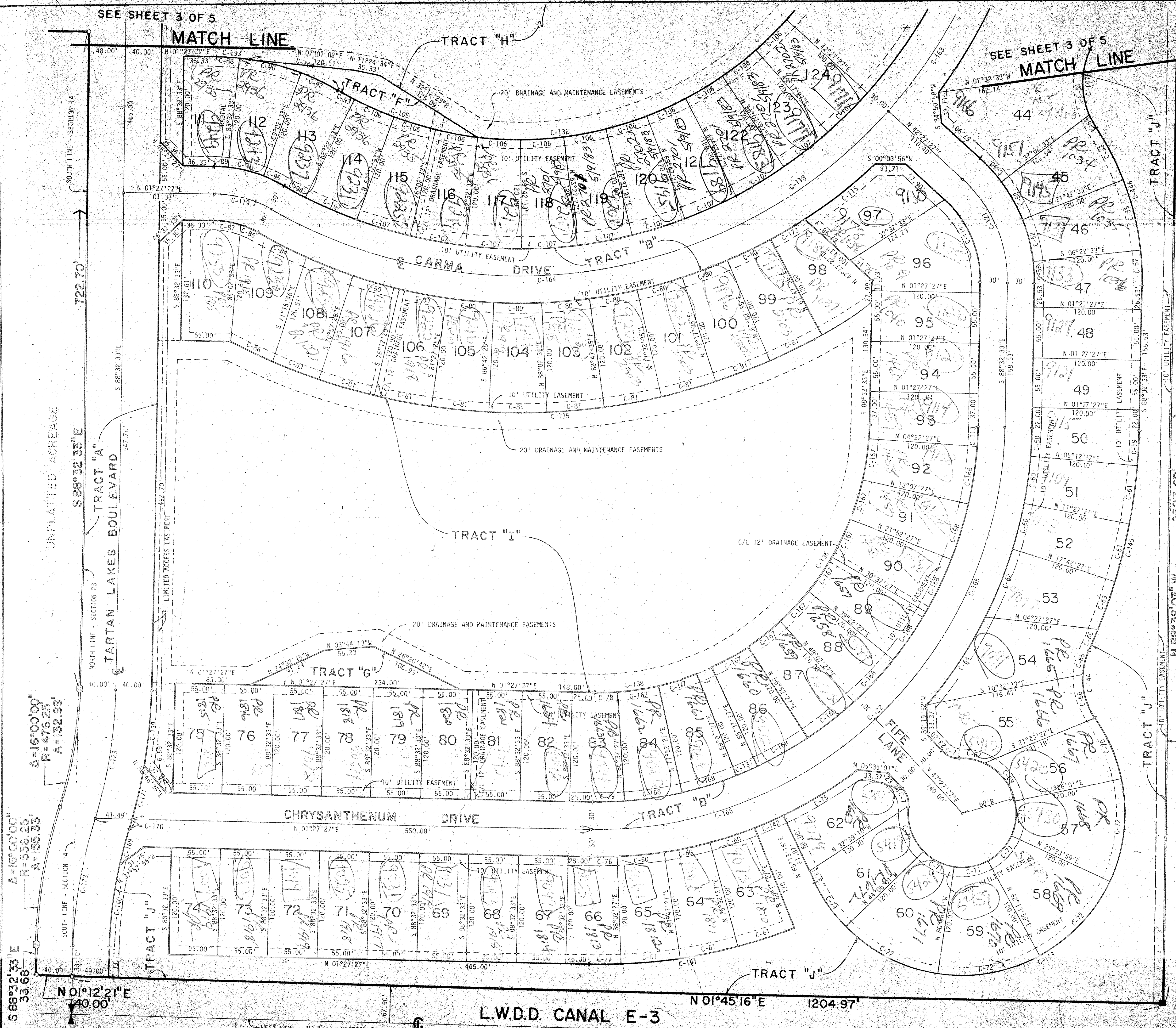
BEING A REPLAT OF PART OF BOYNTON GARDENS, ACCORDING TO THE PLAT THEREOF,
AS RECORDED IN PLAT BOOK 6, PAGE 32, PUBLIC RECORDS, PALM BEACH COUNTY, FLORIDA,
AND LYING IN SECTIONS 14 AND 23, TOWNSHIP 45 SOUTH, RANGE 42 EAST, PALM BEACH COUNTY
FLORIDA.
MARCH, 1980

0316-001 PUD

CONRAD W. SCHAEFER CONSULTING ENGINEERS INC.
PALM BEACH COUNTY, FLORIDA

BENCH MARK
land surveying and mapping, inc.

P2505
3-14-80 1"=50' 4



UNPLATTED ACREAGE

TRACT "A"

TARTAN LAKES BOULEVARD

TRACT "I"

TRACT "G"

CHRYSANTHEMUM DRIVE

TRACT "B"

TRACT "J"

BOYNTON CANAL

L.W.D.D. CANAL E-3

N 01°45'16" E 1204.97'

A=16°00'00"
R=476.25'
A=132.99'

A=16°00'00"
R=536.25'
A=155.33'

S 88°32'33" E
33.68'

N 01°12'21" E
40.00'

722.70'

S 88°32'33" E

N 01°27'27" E

40.00'

40.00'

40.00'

40.00'

40.00'

40.00'

40.00'

40.00'

40.00'

40.00'

40.00'

40.00'

40.00'

40.00'

40.00'

40.00'

40.00'

40.00'

40.00'

547.70'

S 88°32'33" E

N 01°27'27" E

40.00'

40.00'

40.00'

40.00'

40.00'

40.00'

40.00'

40.00'

40.00'

40.00'

40.00'

40.00'

40.00'

40.00'

40.00'

40.00'

40.00'

40.00'

40.00'

547.70'

S 88°32'33" E

N 01°27'27" E

40.00'

40.00'

40.00'

40.00'

40.00'

40.00'

40.00'

40.00'

40.00'

40.00'

40.00'

40.00'

40.00'

40.00'

40.00'

40.00'

40.00'

40.00'

40.00'

547.70'

S 88°32'33" E

N 01°27'27" E

40.00'

40.00'

40.00'

40.00'

40.00'

40.00'

40.00'

40.00'

40.00'

40.00'

40.00'

40.00'

40.00'

40.00'

40.00'

40.00'

40.00'

40.00'

40.00'

547.70'

S 88°32'33" E

N 01°27'27" E

40.00'

40.00'

40.00'

40.00'

40.00'

40.00'

40.00'

40.00'

40.00'

40.00'

40.00'

40.00'

40.00'

40.00'

40.00'

40.00'

40.00'

40.00'

40.00'

547.70'

S 88°32'33" E

N 01°27'27" E

40.00'

40.00'

40.00'

40.00'

40.00'

40.00'

40.00'

40.00'

40.00'

40.00'

40.00'

40.00'

40.00'

40.00'

40.00'

40.00'

40.00'

40.00'

40.00'

547.70'

S 88°32'33" E

N 01°27'27" E

40.00'

40.00'

40.00'

40.00'

40.00'

40.00'

40.00'

40.00'

40.00'

40.00'

40.00'

40.00'

40.00'

40.00'

40.00'

40.00'

40.00'

40.00'

40.00'

547.70'

S 88°32'33" E

N 01°27'27" E

40.00'

40.00'

40.00'

40.00'

40.00'

40.00'

40.00'

40.00'

40.00'

40.00'

40.00'

40.00'

40.00'

40.00'

40.00'

40.00'

40.00'

40.00'

40.00'

547.70'

S 88°32'33" E

N 01°27'27" E

40.00'

40.00'

40.00'

40.00'

40.00'

40.00'

40.00'

40.00'

40.00'

40.00'

40.00'

40.00'

40.00'

40.00'

40.00'

40.00'

40.00'

40.00'

40.00'

547.70'

S 88°32'33" E

N 01°27'27" E

40.00'

40.00'

40.00'

40.00'

40.00'

40.00'

40.00'

40.00'

40.00'

40.00'

40.00'

40.00'

40.00'

40.00'

40.00'

40.00'

40.00'

40.00'

40.00'

547.70'

S 88°32'33" E

N 01°27'27" E

40.00'

40.00'

40.00'

40.00'

40.00'

40.00'

40.00'

40.00'

40.00'

40.00'

40.00'

40.00'

40.00'

40.00'

40.00'

40.00'

40.00'

40.00'

40.00'

547.70'

S 88°32'33" E

N 01°27'27" E

40.00'

40.00'

40.00'

40.00'

40.00'

40.00'

40.00'

40.00'

40.00'

40.00'

40.00'

40.00'

40.00'

40.00'

40.00'

40.00'

40.00'

40.00'

40.00'

547.70'

S 88°32'33" E

N 01°27'27" E

40.00'

40.00'

40.00'